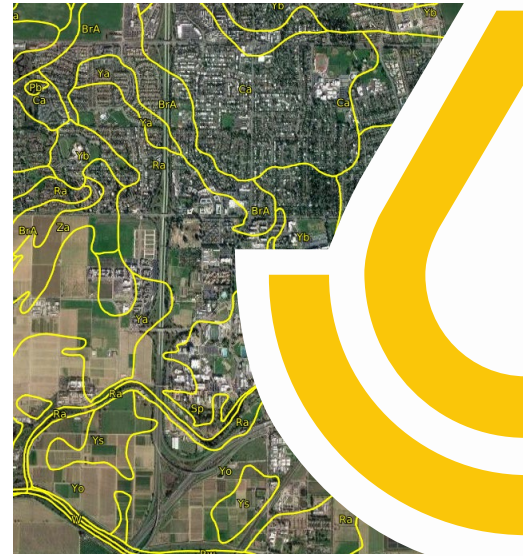




# Defining an AOI for Web Soil Survey on a Mobile Device



USDA United States Department of Agriculture  
Natural Resources Conservation Service

Contact Us | Subscribe | Archived Soil Surveys | Soil Survey Status | Glossary | Preferences | Link | Logout | Help

Area of Interest (AOI) | Soil Map | Soil Data Explorer | Download Soils Data | Shopping Cart (Free)

Search

Area of Interest

Import AOI

Quick Navigation

Address

State and County

Soil Survey Area

Latitude and Longitude or Current Location

PLSS (Section, Township, Range)

Bureau of Land Management

Department of Defense

Forest Service

National Park Service

Area of Interest Interactive Map

View Extent: Contiguous U.S. | Scale: (not to scale)



National Soil Survey Center


Natural  
Resources  
Conservation  
Service

[nrcs.usda.gov/](http://nrcs.usda.gov/)

## Two Options

Two options are available for defining an area of interest on the Web Soil Survey while using a mobile device.

### Option 1

Attach a regular or wireless mouse to the smart device. With a mouse, you can use the **Define AOI** buttons  just as you would if using a desktop computer.

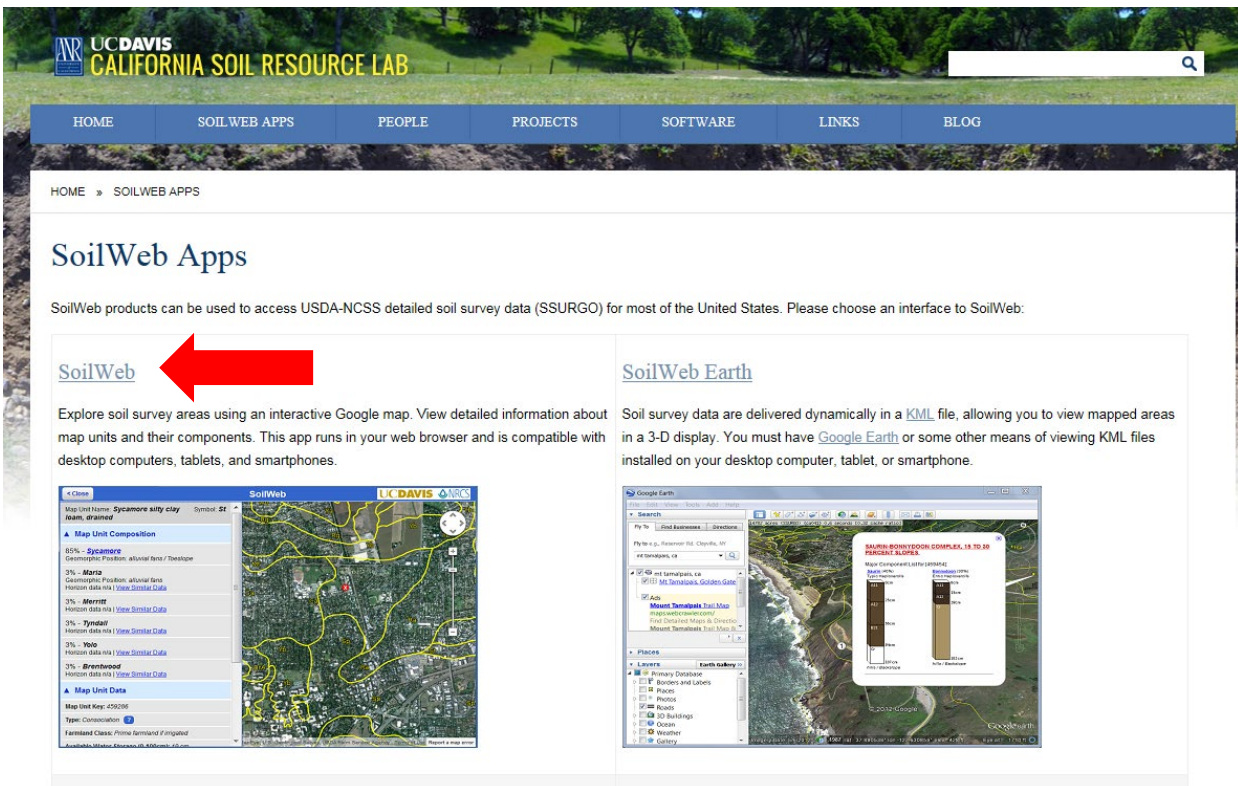
### Option 2

Use the web-based SoilWeb app to select a point location. The app can then create an area of interest (AOI) in WSS around that point.

## SoilWeb

Access the SoilWeb app using a web browser, such as Chrome, IE, Safari, or Samsung Internet. The app is on the UC Davis California Soil Resource Lab website at <https://casoilresource.lawr.ucdavis.edu/soilweb-apps/>.

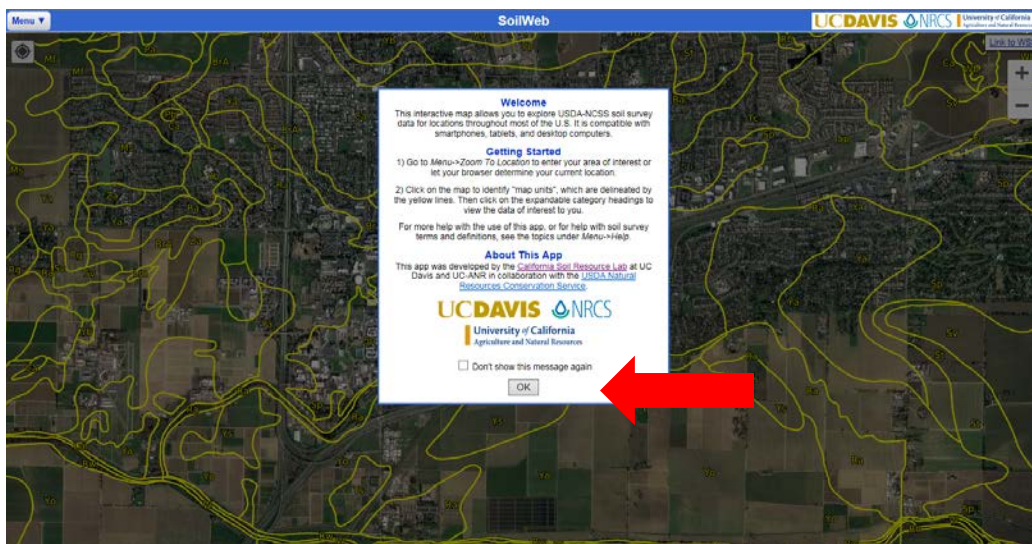
1. Click **SoilWeb**. The application runs from your browser and is not downloaded onto your device.



The screenshot shows the UC Davis California Soil Resource Lab website. The navigation bar includes links for HOME, SOILWEB APPS, PEOPLE, PROJECTS, SOFTWARE, LINKS, and BLOG. The main content area is titled "SoilWeb Apps" and contains the text: "SoilWeb products can be used to access USDA-NCSS detailed soil survey data (SSURGO) for most of the United States. Please choose an interface to SoilWeb:". Below this text are two options: "SoilWeb" and "SoilWeb Earth". A red arrow points to the "SoilWeb" link. The "SoilWeb" option includes a description: "Explore soil survey areas using an interactive Google map. View detailed information about map units and their components. This app runs in your web browser and is compatible with desktop computers, tablets, and smartphones." Below the description is a thumbnail image of the SoilWeb interface showing a map with various soil units and a legend. The "SoilWeb Earth" option includes a description: "Soil survey data are delivered dynamically in a KML file, allowing you to view mapped areas in a 3-D display. You must have Google Earth or some other means of viewing KML files installed on your desktop computer, tablet, or smartphone." Below the description is a thumbnail image of the Google Earth interface showing a 3D view of a soil survey area with a data popup window.




2. Click **OK** in the welcome box.

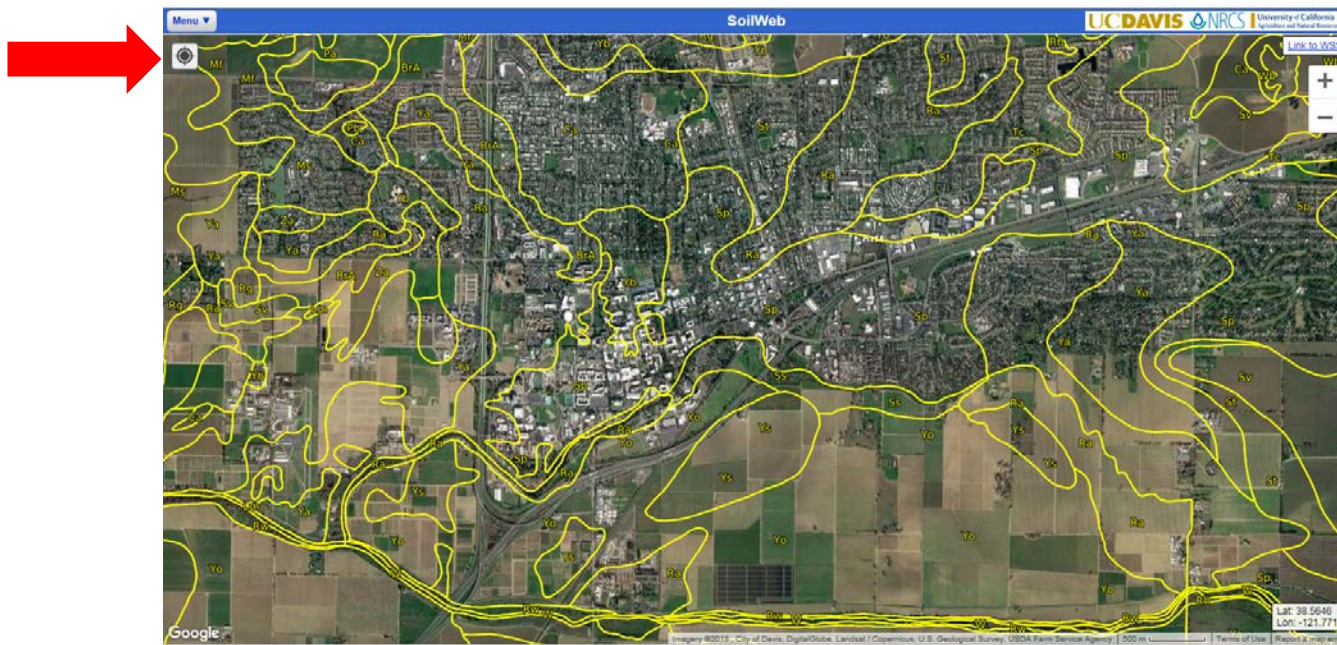


3. You can pick a location in two ways.

- I. Zoom to My Location (only for devices that have GPS).
- II. Search by Location (address, city/state, zip code, landmark, or latitude/longitude).

## I. Zoom to My Location

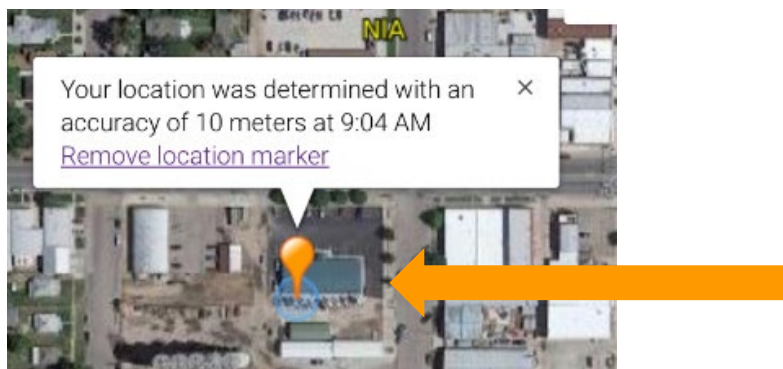
1. Click the **Zoom to my location using the current geolocation settings** button  in the **upper left corner** of the map.



2. The following message appears. Make sure to allow permission to determine your location.



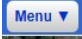
3. Once your location is determined, a message appears stating that your location was determined and to what accuracy. Signal strength determines the accuracy; repeating step 1 may increase your accuracy. An orange marker shows your location.

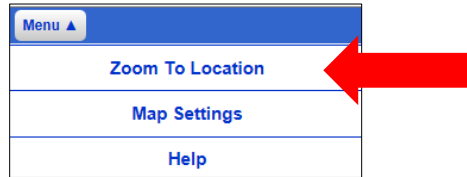


4. After your location is determined, you can (1) continue using the SoilWeb application to get soil information or (2) click **Link to WSS** in the upper right corner of the map to get soil information through WSS. The link creates an Area of Interest (AOI) in WSS. See the section “Web Soil Survey” below.

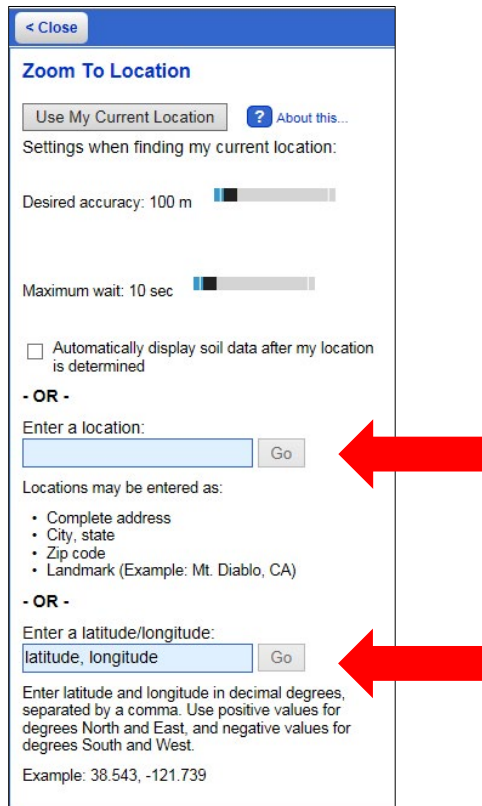


## II. Search by Location

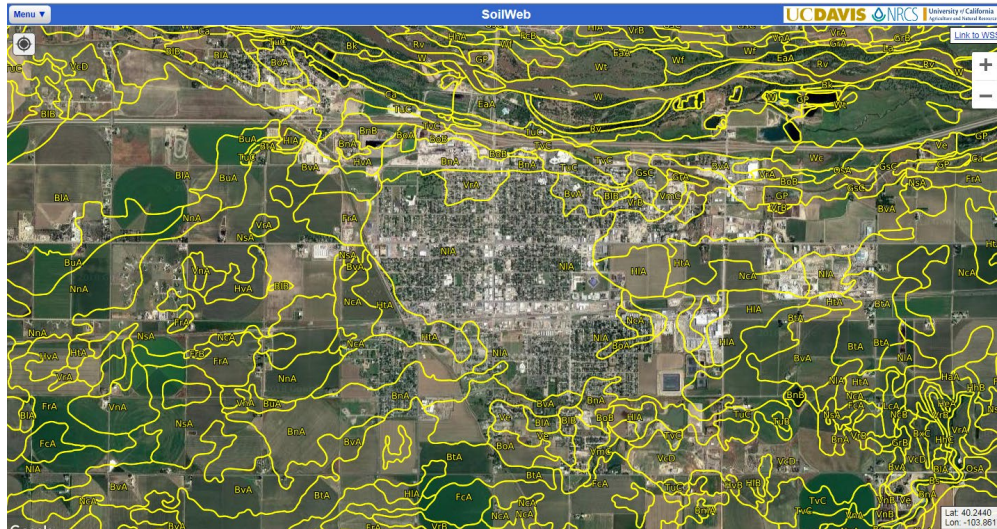
1. If you do not use the **Zoom to my location using the current geolocation settings** button, you can search for a location by clicking the **Menu** button  in the upper left-hand corner of the app. Next, select **Zoom to Location**.



2. A search box opens that allows you to enter **a location** or **a latitude and longitude**. Choose your search option and click **Go**.

A screenshot of the "Zoom To Location" search screen in a mobile application. The screen has a blue header with a "< Close" button. Below the header, the title "Zoom To Location" is displayed. There is a button labeled "Use My Current Location" and a link labeled "? About this...". Underneath, it says "Settings when finding my current location:" followed by two sliders: "Desired accuracy: 100 m" and "Maximum wait: 10 sec". There is a checkbox labeled "Automatically display soil data after my location is determined" which is currently unchecked. Below this, it says "- OR -". There are two input options: "Enter a location:" with a text input field and a "Go" button, and "Enter a latitude/longitude:" with a text input field containing "latitude, longitude" and a "Go" button. Below the second input field, there is explanatory text: "Enter latitude and longitude in decimal degrees, separated by a comma. Use positive values for degrees North and East, and negative values for degrees South and West. Example: 38.543, -121.739". Two red arrows point from the right side of the screen to the "Go" buttons of the two input options.

3. A map of the location is displayed. After the map appears, you can (1) continue using the SoilWeb application to get soil information or (2) click **Link to WSS** in the **upper right corner** of the map to access soil information through WSS. This link creates an Area of Interest (AOI) in WSS. See the section “Web Soil Survey” below.



## Web Soil Survey

1. Regardless of which method you use to find a location, the **Link to WSS** button opens the Web Soil Survey in a separate browser window. An AOI is generated around the location. The AOI is outlined in a light blue cross-hatched box.
2. If you need a larger AOI, go back to the SoilWeb application, zoom out, and then click **Link to WSS** again.



# Accessibility Statement

---

The USDA Natural Resources Conservation Service is committed to making its information accessible to all of its customers and employees. If you are experiencing accessibility issues and need assistance, please call the USDA Service Desk at 1-800-457-3642. For assistance with publications that include maps, graphs, or similar forms of information, you may also wish to contact your state or local office (<https://www.nrcs.usda.gov/wps/portal/nrcs/main/national/contact/local>).

## **Nondiscrimination Statement**

In accordance with Federal civil rights law and U.S. Department of Agriculture (USDA) civil rights regulations and policies, the USDA, its Agencies, offices, and employees, and institutions participating in or administering USDA programs are prohibited from discriminating based on race, color, national origin, religion, sex, gender identity (including gender expression), sexual orientation, disability, age, marital status, family/parental status, income derived from a public assistance program, political beliefs, or reprisal or retaliation for prior civil rights activity, in any program or activity conducted or funded by USDA (not all bases apply to all programs). Remedies and complaint filing deadlines vary by program or incident.

Persons with disabilities who require alternative means of communication for program information (e.g., Braille, large print, audiotape, American Sign Language, etc.) should contact the responsible Agency or USDA's TARGET Center at (202) 720-2600 (voice and TTY) or contact USDA through the Federal Relay Service at (800) 877-8339. Additionally, program information may be made available in languages other than English.

To file a program discrimination complaint, complete the USDA Program Discrimination Complaint Form, AD-3027, found online at [http://www.ascr.usda.gov/complaint\\_filing\\_cust.html](http://www.ascr.usda.gov/complaint_filing_cust.html) and at any USDA office or write a letter addressed to USDA and provide in the letter all of the information requested in the form. To request a copy of the complaint form, call (866) 632-9992. Submit your completed form or letter to USDA by:

- (1) mail: U.S. Department of Agriculture  
Office of the Assistant Secretary for Civil Rights  
1400 Independence Avenue, SW  
Washington, D.C. 20250-9410;
- (2) fax: (202) 690-7442; or
- (3) email: [program.intake@usda.gov](mailto:program.intake@usda.gov).

USDA is an equal opportunity provider, employer, and lender.



USDA is an equal opportunity provider, employer, and lender.

[NSSC] • [March 2019]

